

# KID SAVVY PC

Written by Garrett Kendrick

Thank you for choosing Kid Savvy PC. This software was designed to help parents safely introduce their children to computers and the internet. While this software has many features that are customizable, it is designed to work and meet your basic needs with minimal effort.

**SCOPE:**

This manual is designed to help you understand Kid Savvy PC’s many features and learn how to customize them. If at any time you experience technical issues, please visit this manual or

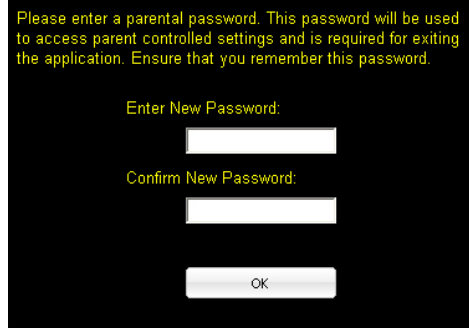
<http://www.kidsavvypc.com/support.html>

Please read the End User License Agreement (EULA.rtf) document to understand your rights and liabilities as an end-user of this software.

Please read the Legal Disclaimer (Legal.rtf) document to understand this software’s legal claims and responsibilities.

## Initial Password Setup:

After the initial installation, the first time you run Kid Savvy PC you will be prompted to set up a password. This password is required for exiting the program, so please ensure you remember it.



Please enter a parental password. This password will be used to access parent controlled settings and is required for exiting the application. Ensure that you remember this password.

Enter New Password:

Confirm New Password:

OK

Once you enter the new password and confirm it the program will continue loading.

## Basic Use:

You will see that the main window consists of three tabs; “World Wide Web,” “Software,” and “Activities.”

The “World Wide Web” tab allows access to predetermined websites via scrolling links at the top of the screen. To scroll the link to the left, click on the yellow arrow on the left. To scroll the links to the right, click on the yellow arrow on the right.

By default, pop-ups are disabled, but if you wish to allow pop-ups you can enable them in the setting section discussed later.

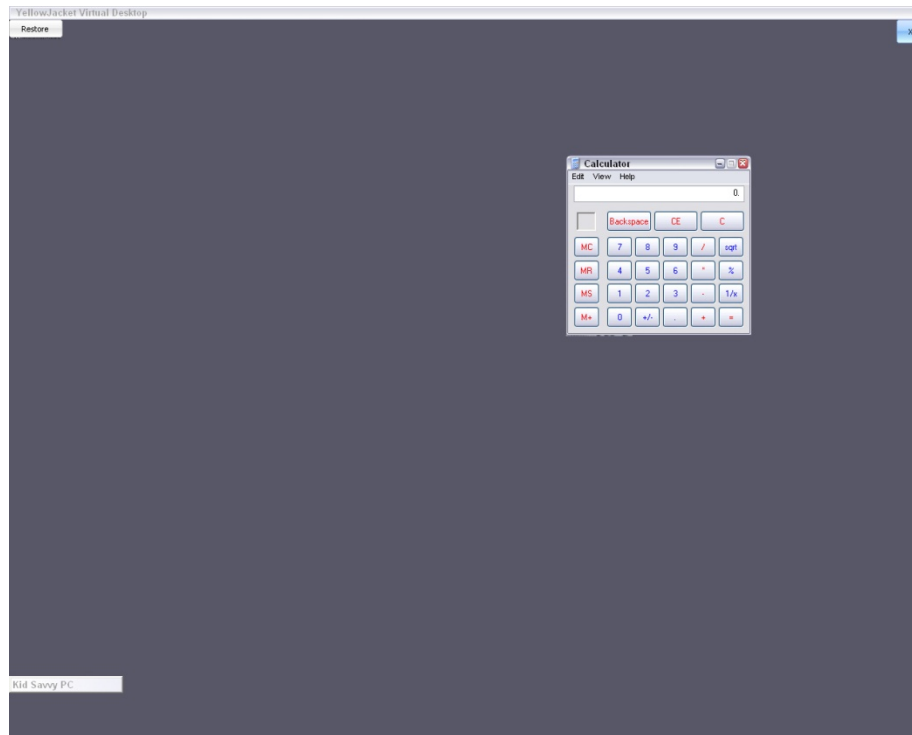


The "Software" tab displays buttons for the user to run certain programs and games that were setup by you in the settings section.

The yellow shield icon will execute the virtual desktop without running a selected application.



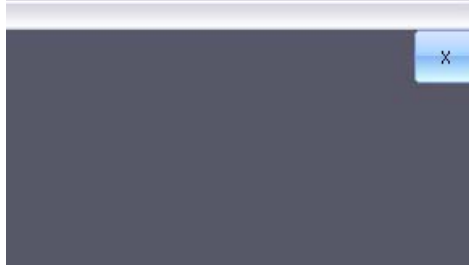
When the user clicks on one of the buttons, Kid Savvy PC will minimize and a virtual desktop will appear.



The selected program will run on this virtual desktop much as it would the normal Windows desktop. On this virtual desktop are two buttons. “Restore” and “X.”

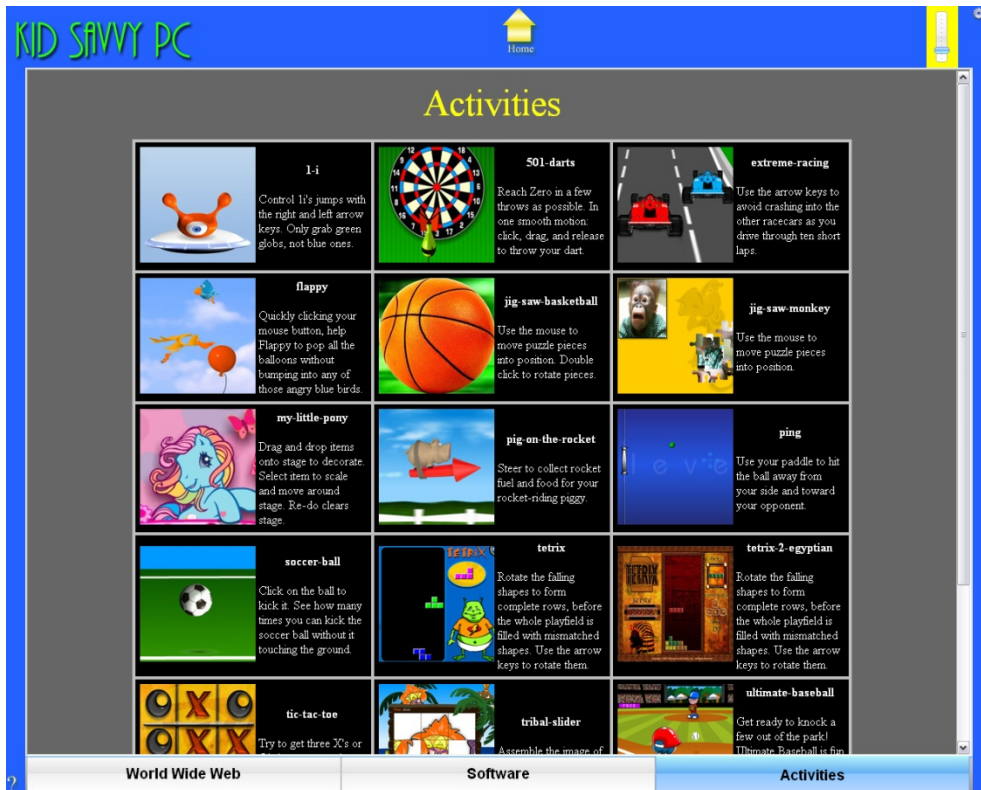


The “Restore” button will bring the running program back into view if the user has minimized it.



The "X" button will close the running program and the virtual desktop, and then maximize Kid Savvy PC.

The "Activities" tab will show a list of activities and give short descriptions of them. Clicking on the images will load the selected activity in this window. The yellow home icon will return the user back to the main menu.



Additionally, you will see a small question mark in the lower left corner. Clicking on this image will produce the “Read Me” file.



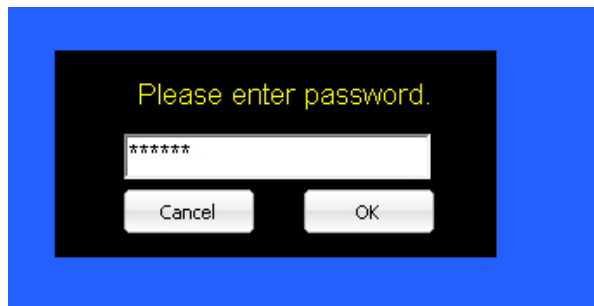
In the upper right corner you will see a gear image. Clicking here will allow access to the setting section along with the option to exit the program. First, however, you will be prompted for your password. This is the password that you originally set.



You will also see a yellow and blue vertical slide-bar. This adjusts the audio volume up and down. You can choose to hide this slide-bar in the settings section if you wish.

## Settings Section:

As earlier mentioned, once you click on the gears icon in the upper right corner you will be prompted for a password.



After you enter the correct password and click “OK” you will enter the settings section. This section is divided into tabs for ease of use.

In the upper section you will notice 4 buttons; “Save Settings,” “Lock Out,” “Exit Program,” and “Minimize.”



The “Save Settings” button, when clicked, will save all newly entered settings from the entire settings section.

The “Lock Out” button, when clicked, will save all settings section settings and exit the settings section bringing you back into the main section. It is then safe to let your child use the software.

The “Exit Program” button will save all settings section settings and completely close Kid Savvy PC.

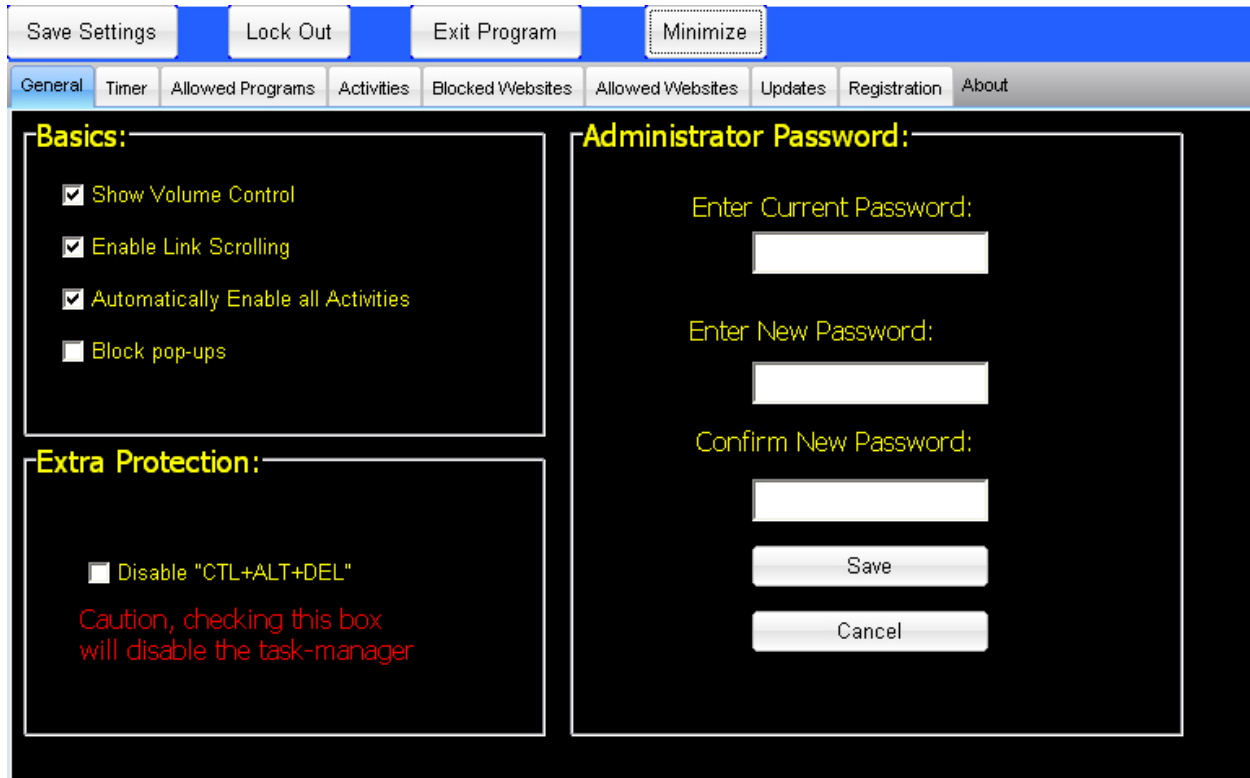
The “Minimize” button, when clicked, will minimize the settings window and display your windows environment.

Once minimized, you can use Windows as you normally would.

To re-enter the settings section simply click on the “Kid Savvy PC” button on the task bar and then click the button labeled “Kid Savvy PC” in the lower left section of the desktop.



The tabs within the settings section include: General, Timer, Allowed Programs, Activities, Blocked Websites, Allowed Websites, Updates, Registration, and about.



In the General tab, you have the option to change basic settings, manage extra protection, and change the password.

The “**Basics**” settings are described below.

Checking the “Show Volume Control” box will show the audio volume control mentioned earlier and allow them to adjust it.

Checking the “Enable Link Scrolling” will allow the links in the “World Wide Web” section to scroll continuously. If your computer seems slow, you might un-check this box to increase system performance.

Checking the “Automatically Enable all Activities” box will allow the program to automatically add links to all new activities provided by automatic and manual updates. If you wish to maintain more stringent control over what the user has access to, you should consider un-checking this box.

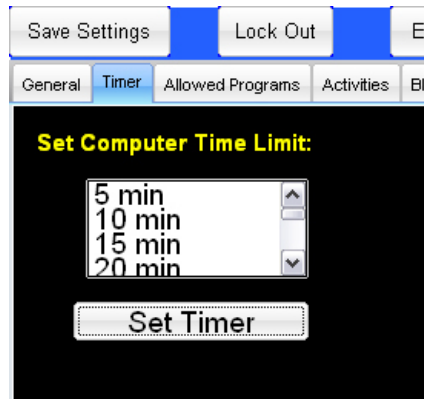
Checking the “Block pop-ups” box will disable all pop-up windows that would be presented while using the “World Wide Web” section and “Activities” section. By default, this box is checked. If your user experiences issues while surfing the internet such as links that don’t seem to load anything, you can un-check this box to fix it.

The **Extra Protection** section only has one item; the “Disable CTRL+ALT+DEL” check-box. This should be kept unchecked unless you have trouble with your user exiting Kid Savvy PC by pressing the Control, Alt, and Delete keys simultaneously.

**WARNING!** *Checking this box will not allow you to access the task manager by pressing “CTRL+ALT+DEL”. If you check this box and then forget your password, you will have to manually power-off your PC to exit the program. Loss of data may occur.*

In order to change the password in the **Administrator Password** section, you must enter the current password, the new password, and then confirm the new password in the appropriate blocks then click “Save” If you fail to click “Save” your password will not be changed.

The Timer tab allows you set a count-down timer to limit computer use.



Simply select the desired length of time and click "Set Timer."

This will begin the count-down.

The user will be kept aware of the remaining time by a clock in the upper left section of the screen.

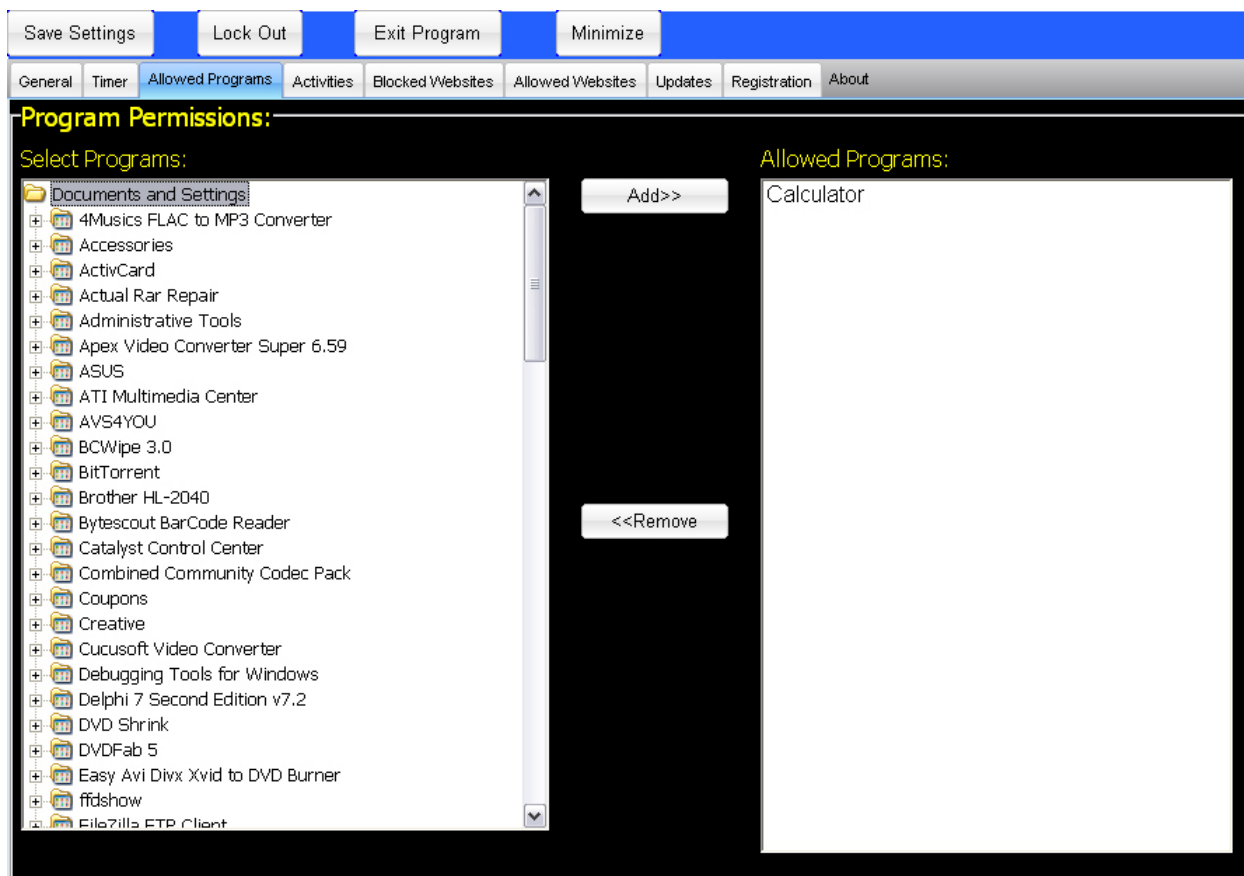


When the selected time elapses, the user will be locked out of all activities, web browsing and external applications.



You must then log-in with your password to clear the lock-down. Simply click "Reset" and enter your password. This will then bring you into the setting section. You can then set a new timer or just click "Lock Out" to re-enable all activities without a time limit.

The “Allowed Programs” tab allows you to specify other programs that the user will have access to. All selected programs will have their own button in the “Software” section.

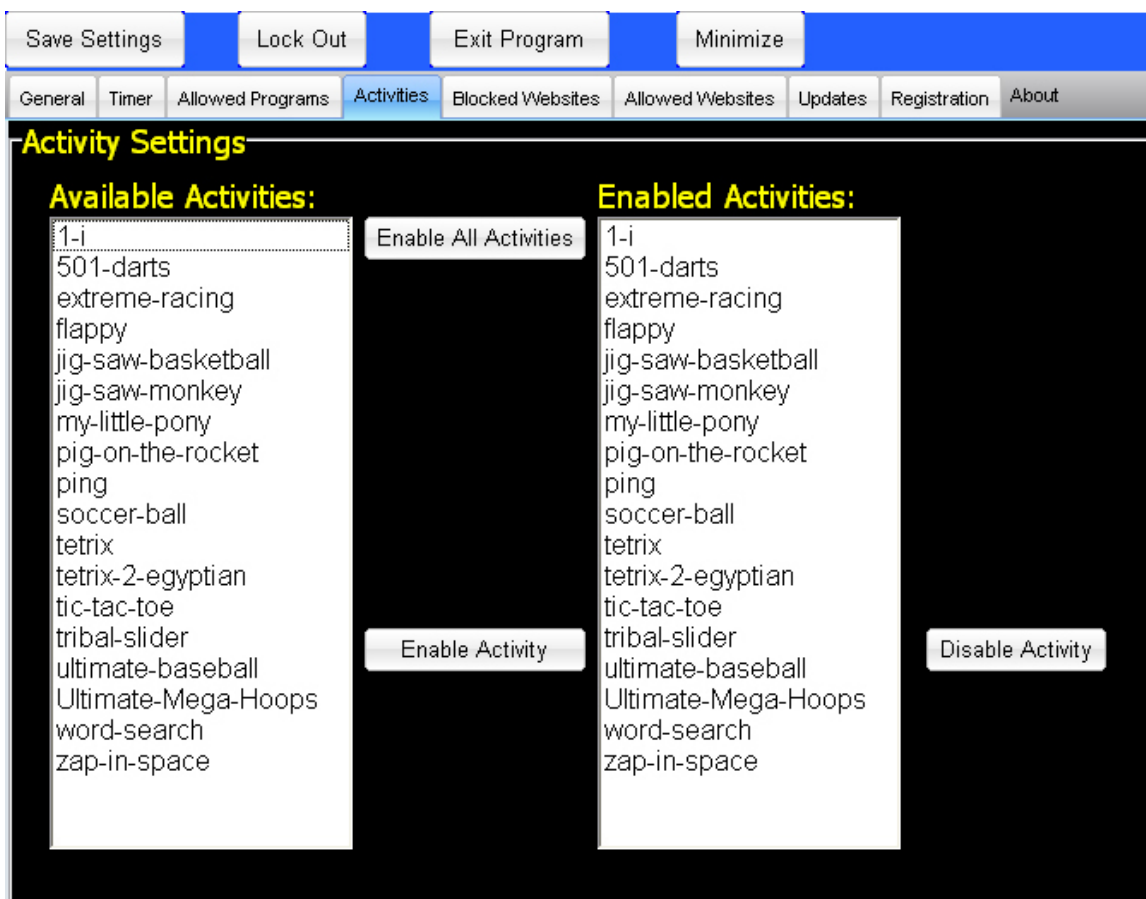


To allow access to a program or game, just locate and select it in the box on the left and click “Add.” This will copy it over to the box on the right.

To remove access to a program or game just select it in the box on the right and click “Remove.”

**WARNING:** Many programs can allow inadvertent access to computer files or un-filtered access to the internet. Please use caution when allowing access to external programs.

The “Activities” tab allows you to allow/disallow certain installed activities.



If you checked the “Automatically Enable all Activities” box in the “General” tab, all activities will always be enabled. If you wish to disallow access to certain activities make sure that that check-box is unchecked.

To allow all currently available activities click on the “Enable All Activities” button.

To allow a single activity, select it in the box on the left and click “Enable Activity.”

To disallow a single activity select it in the box on the right and click “Disable Activity.”

The “Blocked Websites” tab allows you to specify certain web sites (domains specifically) to block.



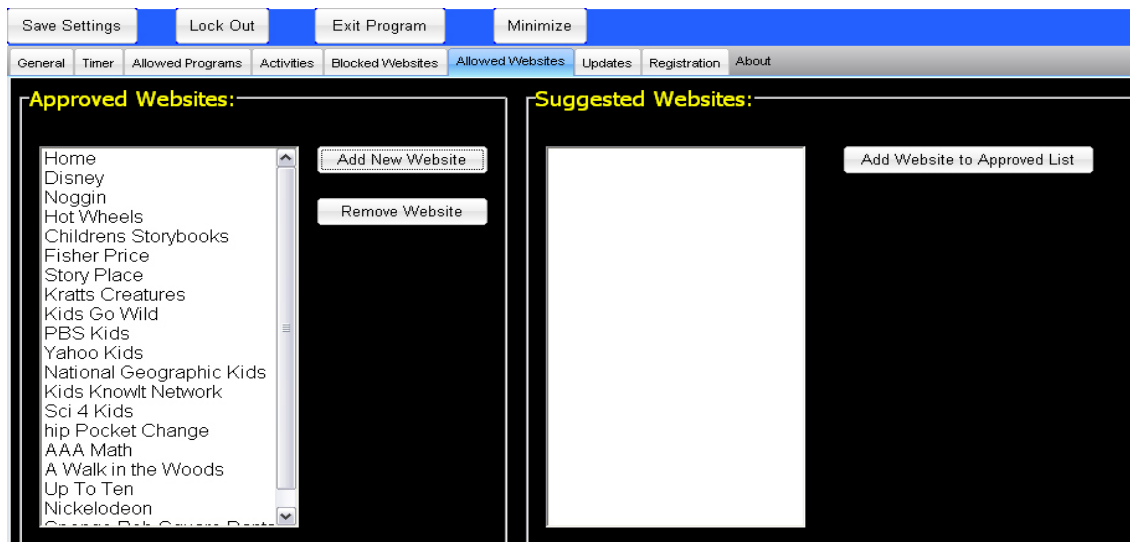
To block a domain simply enter it in the block on top and click “Add”. This will add it to the list below the block.

To remove a domain (unblock it) select it in the bottom box and click “Remove”.

Kid Savvy PC will automatically file all sites loaded in the “World Wide Web” section, and block any that include the listed sites.

**NOTE:** Please understand that the sites that come pre-loaded as blocked are not recognized as malicious or inappropriate by Kid Savvy PC; they are blocked because that have the ability to allow access to inappropriate web content. Use caution when adding and removing domains.

The “Allowed Websites” tab allows you to add/remove links that are displayed in the upper section of the “World Wide Web” section.



Displayed in the section on the right are additional recommended websites that came with the most recent update. To add a link to the recommended website just select it in the box on the right and click “Add Website to Approved List.”

To remove a link, just select it in the box on the left and click “Remove Website.”

To create a new link, simply click “Add New Website.” This will display a new window that allows the creation of a thumbnail image link.

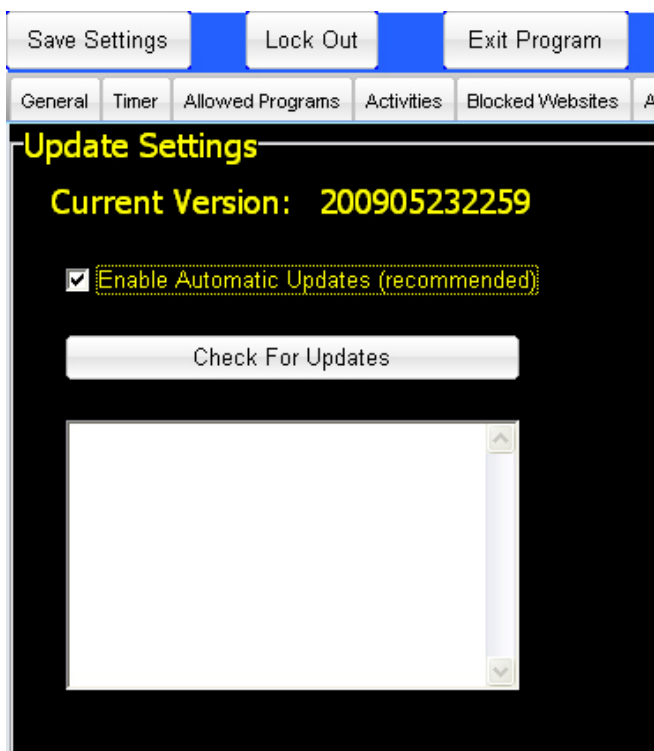


Enter the title of the link in the “Link Title” box, the web address in the “URL” box and click “Go.”

This will load the website in the window on the bottom. Once it loads, if it is the correct site, click “Save.”

The window will close and the new link will be added to the “Approved Websites” box on the left.

The “Updates” tab allows you to manage automatic update settings and to perform manual updates.



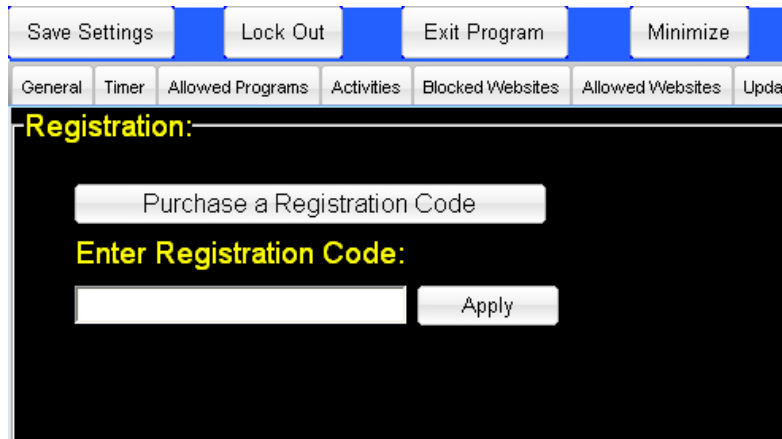
By checking the “Enable Automatic Updates” box, the program will periodically check for and perform updates automatically while remaining transparent to the user.

To perform a manual update, simply click “Check For Updates.”

The box on the bottom displays any supplemental information that came with the most recent update.

If any significant updates were performed, Kid Savvy PC will run an update utility when it exits to apply the changes. This utility will appear as “Update.exe” and is completely automatic.

The “Registration” tab allows you to register your copy of Kid Savvy PC using a 17 digit registration code.



If you have a registration code already, just enter it into the box and click “Apply.”

If you do not yet have a registration code, click “Purchase a Registration Code” to navigate to the Kid Savvy PC registration website in your default web browser.

There you can purchase a registration code using a credit card, debit card, or check. Once the payment has cleared, your registration code will be e-mailed to you (with credit cards it takes only seconds).

Once you have the registration code, enter it as mentioned above.

If you experience any problems or errors, please contact us at [support@kidsavvypc.com](mailto:support@kidsavvypc.com) or go to <http://www.kidsavvypc.com/support.html>